



Kent Narrows Waterfront

SPRING 2024

CHESTER & GRASONVILLE, MARYLAND

H.M. KRENTZ

YOUR OFFICIAL GUIDE

CONTENTS

Welcome	1
What's New	2
Accommodations	4
Meetings and Gatherings.. ...	4 & 10
Eateries, Dock and Dines	10
Map	19
Chesapeake Heritage Center	23
Parks & Trails.....	23
Watermen's Monument	25
Fishing	27
Pleasure Cruising	29
Marinas and Boat Storage	30
Spas and Salons	34
Attractions.....	34
Boutique and Outlet Shops	34
Golf	34
Businesses Serving Boaters	35
Transportation Service.....	35
Bay Bridge Info	37
Visitor Info	38



Front Cover: A visiting vessel hosts a dockside reception at the Big Owl.

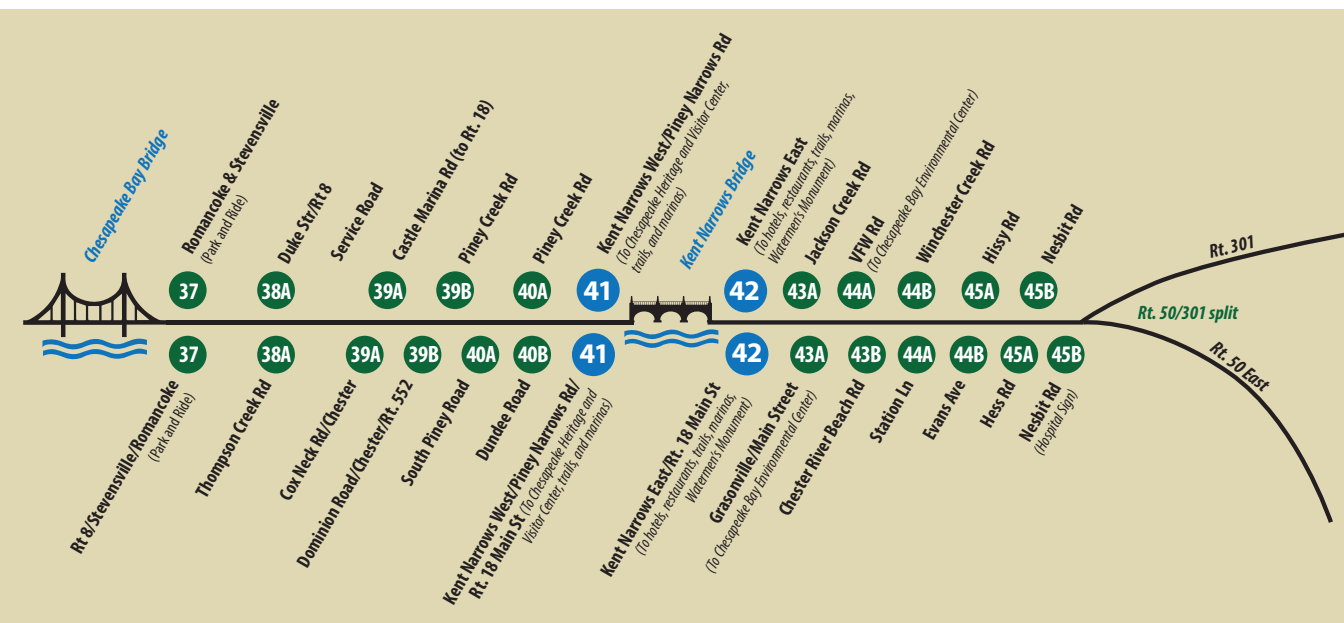
Inside Cover: View of Safe Harbor South from the waterfront at Bridges Restaurant, with Fisherman's Crab Deck and the Hyatt Place in the background.

Back Cover: Ferry Point Park in the Fall.



Welcome to Kent Narrows

Kent Narrows East at dawn.



Map shows the highway exits in Queen Anne's County from the Chesapeake Bay Bridge to the Route 50/301 split. The Kent Narrows vicinity is highlighted in blue.

WITH SO MANY NEW THINGS TO SEE AND DO KENT NARROWS IS NOW A PLACE FOR ALL SEASONS!



Welcome to Kent Narrows! We invite you to enjoy the wonders of our scenic maritime community conveniently located five miles east of the Chesapeake Bay Bridge on Maryland's Eastern Shore. The Kent Narrows Waterfront is the home to four hotels and to iconic eateries and dock n' dine places, all with water views, and all within a short walk of one another! During your visit you'll come across specialty gift and apparel shops and even a spa or two.

Explore the area via our extensive trail

system and branch out to explore the quintessential shore towns that line the Chesapeake Country Scenic Byway which runs through the Kent Narrows region.

Enjoy the laid-back atmosphere and scenic water views over a bottle of wine, a steamy hot beverage or a specially made seasonal drink. Check the marinas, purchase watercraft or plan a fishing or boating excursion for the warmer months.

With the addition of a new hotel, boutique stores and new indoor gathering places, Kent Narrows is the perfect place to hold a

wedding, rehearsal dinner, business retreat, or other celebratory event.

The Hilton Garden Inn, the Best Western, Holiday Inn Express, Annapolis East, and the new Hyatt Place Kent Narrows and Marina are all within walking distance of one another and are connected by scenic trails which lead to waterfront restaurants, dock bars, promenades, and scenic overlooks. On clear days, you'll experience iconic sunrises and sunsets that Kent Narrows is known for.

COME FOR THE SEAFOOD & OTHER CULINARY DELIGHTS!

Enjoy the freshest local seafood from the Chesapeake Bay region throughout the Winter and Spring

With an oyster packing facility located right off the docks of our waterfront, oyster dishes are number one in these parts! Have them raw on the half shell, broiled or in a delicious stew.

Kent Narrows is one of the few places in Maryland where you can dine on hard crabs throughout the winter season. In addition to oysters, crab dishes of all kinds are the most popular menu pick.

The restaurants, accommodation and entertainment venues here offer special events for New Year's Eve, Valentine's Day, St. Patrick's Day, and Easter Time. Watch the Kent Narrows Waterfront Facebook page to see both holiday and other specials offered throughout the cooler months.

Places like Fisherman's Inn, the Jetty Dock Bar, the Dock House, Harris Crab House and the Placery at the Hyatt Place all have big screens running with popular sporting events! See Page 10 for Dining Options!

THE PERFECT SPOT FOR BIRDERS

Many species of birds winter here in the Chesapeake Bay Region. Beautiful white tundra swans often gather with ducks in the coves later in the season. Canada Geese and Bald Eagles can be spotted overhead and in nearby fields. See the Chesapeake Environmental Center. Page 24



Many eateries have added heated outdoor spaces like the one pictured here at Harris Crab House. Page 15.



The FIN Bike Rental Kiosk is now at the Holiday Inn Express, page 7, and near the Hyatt Place, page 8.



The table is set for a rehearsal dinner at the Dock House Restaurant. Page 12.



Hope Boutique has moved to the Boatel Complex. Page 34.

Stay and Play



Hilton Garden Inn and Wells Cove Marina

You'll find a variety of places to stay at Kent Narrows. All are conveniently located off of Rt. 301/50, just five miles east of the Chesapeake Bay Bridge. Locally owned seafood restaurants, dock-and-dine venues, waterside trails and parks are within walking distance.

Our hotels offer waterside venues that are perfect for wedding parties, corporate retreats, reunions and other events.

Because the Kent Narrows Waterfront is close to Annapolis, many choose to stay here for nearby sporting events, Navel Academy grad-

uations, boat shows and other maritime related events. Others choose to explore the many attractions right here in Queen Anne's County.

Kent Narrows is also a popular location for business travel. It's within 10 minutes of the business parks on Kent Island and in Centreville. Finally, if you enjoy fishing or boating, Kent Narrows is the place to stay. Charter boats, head boats, and marinas are within walking distance of our hotels. Read on to find the place that's right for you!



BEST WESTERN KENT NARROWS INN

3101 Main Street, Grasonville, MD 21638
410.827.6767 | bestwestern.com/kentnarrows

Across the street from Fisherman's Inn, Crab Deck and Watermen's Monument.

95 Guest Rooms
Waterviews
Pet Friendly
Complimentary Wi-Fi
Complimentary Breakfast
Refrigerator, Microwave, and Coffee Maker
40" flat-screen TV with HBO and Cinemax
Indoor Pool, Fitness Center
Rooms with Spa Tubs
Free Self-Parking
Easy access to walking and cycling trails, public boat landings, marinas, and fishing boats.





HILTON GARDEN INN KENT ISLAND

3206 Main Street, Grasonville, Maryland 21638
410-827-3877 | kentisland.hgi.com

Waterfront Hotel with its own marina. Rooms with balconies overlooking Prospect Bay and Kent Narrows.

- 90 Guest Rooms
- Private balconies overlooking the water
- Waterfront terrace walkway
- On-site restaurant and room service
- Garden Grille and Bar (*offers breakfast and full service dinner*)
- Nightly Happy Hour Specials
- Pavilion Lounge
- Free Self-Parking
- Chesapeake Board Room
- Fitness Room and Heated Indoor Pool
- Divisible Meeting Space with catering for up to 100 guests
- Free WiFi
- EV Charging Station
- Pet-Friendly Rooms





HOLIDAY INN EXPRESS ANNAPOLIS, EAST-KENT ISLAND, GRASONVILLE

1020 Kent Narrows Road, Grasonville, MD 21638
410.827.4454 | holidaykentisland.com

Nestled centrally in The Kent Narrows Resort Area the Holiday Inn Express® Hotel Annapolis East - Kent Island not only offers visitors stunning views of the water, but provides an excellent location, so our guests can enjoy the area's unparalleled dining and entertainment.

- 76 Guest rooms at our direct waterfront hotel
- Meeting and banquet space to accommodate many occasions of up to 125 guests
- Outdoor Pool to enjoy fresh air and sunshine, open Memorial Day to Labor Day
- Group, corporate, and wedding rates
- Free high-speed, wireless internet access throughout the hotel
- Complimentary, hot *Express Start Breakfast Bar*
- Property includes an observation deck and a pier that extends into the cove
- Cross Island Trail and Cross County Connector Trail access
- Bike rental kiosk
- We hope to welcome you soon!





HYATT PLACE HOTEL

3028 Kent Narrows Way South Grasonville MD 21638 | For Information 443-446-6000

Newly Opened the Hyatt Place Kent Narrows and Marina's waterfront location offers a scenic backdrop to your wedding, corporate retreat, or weekend getaway.

- 120 Guest Rooms
- Complimentary Breakfast Buffet
- Water Views | Private Balconies
- Complimentary Wi-Fi Internet Access
- Pet Friendly | Free Self-Parking
- Bike Rentals | 40 Slip Marina
- 24 Hour Fitness Room
- Heated Indoor Pool
- Queen Anne's Ballroom 2,640 SQFT Overlooking The Water
- Meeting Room A/B 1,200 SQFT Overlooking The Water
- Narrows Boardroom 500 SQFT 250 SQFT
- Unique Waterfront Outdoor Function Space 3,500 SQFT
- Onsite Catering with Dedicated Banquet Kitchen



CASS-AWAY AND CASS-AND-REEL LUXURY HOUSE BOATS

KentNarrowsRentals.com

If you want a unique luxury overnight experience... the "Cass-Away" is it! This 640 square foot houseboat includes a large 2nd level deck overlooking the Kent Narrows waterway and a beautiful sunset. Two bedrooms with their own full bathroom, a full kitchen and a spacious living room make this a perfect one-of-a-kind getaway. Located next to Big Owl Tiki Bar. The House Boat is within an easy walk to many other fun places in the Narrows. The Cass-and-Reel is a one bedroom luxury unit, located adjacent to the Cass-Away.



ANNUAL EVENTS IN THE KENT NARROWS REGION

Kent Narrows is the home to Queen Anne's County Independence Day Celebration which features a Fireworks Show.

The Kent Island Yacht Club hosts events that are open to the public including the Chesapeake Motoring Festival in June and the St. Michaels Concourse'd Elegance in September. Both events feature Chesapeake Bay Yachting and Motoring.

In December the Queen Anne's County Watermen's Association arranges a series of events that culminate in the building of and lighting of painted crab basket trees. During the first week of December a Craft Fair and Tree Lighting event is held. The Trees remain



The Concours d' Elegance on the Chesapeake Bay is held at the Kent Island Yacht Club in late September.

up until the end of January and are a popular photo stop for those visiting during the Holidays.

A full schedule special televised sporting events are offered for viewing

in many of the restaurants and dock bars and well known bands and a variety of live music is offered outdoors during the boating season and at selected venues indoors year-round.



Dock and Dime

Ask a local where their favorite restaurant is here and you'll probably get this response. "All are outstanding... it depends on what you're looking for!"

Most of our restaurants offer outdoor and indoor dockside dining, and all have views of the water. This area is well known as the place to enjoy a great sunset while you dine.

Our one-of-a-kind eateries feature just about anything a seafood

aficionado would hope for. Whether you're in the mood for a dock and dine tiki bar, looking for the authentic crab house experience, or a gourmet meal from a scratch kitchen, you'll find it all here in Kent Narrows. Many of our restaurants also offer take out meals and even offer shipping services of specialty dishes so that you can have a "Taste of the Narrows" from home. Our restaurants purchase fresh ingredients from local sources.



BRIDGES ON KENT NARROWS

RESTAURANT, BAR & DOCK | 321 Wells Cove Road, Grasonville, MD 21638 | 410-827-0282 | bridgesrestaurant.net

Offers made-to-order dishes that are prepared from scratch using the finest ingredients. Dishes feature the best of the Chesapeake Bay region. Open daily for lunch and dinner. Happy Hour offered Sunday through Friday. Spectacular views of the Kent Narrows and Prospect Bay. Named in 100 Most Scenic Restaurants in America.

Indoor and outdoor dining offered year-round. Will host special events.

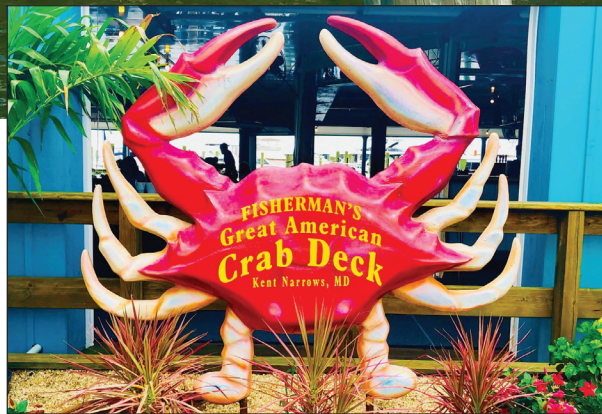
Dock-and-dine boats up to 65', 20' width and 12' draft accommodated. Slips come with water, electricity, and spectacular views. Overnight slips are available for a fee with dinner reservations. Wheelchair accessible.



DOCK HOUSE

110 Piney Narrows Road, Chester MD 21619 | 443-446-4477

The Dock house features coastal cuisine including fresh seafood, fresh ingredients, and seasonal produce which is locally sourced whenever possible. The Dock House is open year round and serves local favorites, simply prepared. Enjoy panoramic views of the Kent Narrows, amazing food, signature cocktails and fine wines. Indoor or outdoor seating on the wrap around deck is available and private space for groups can be reserved. Free dockage is offered while dining. Guests are welcomed on a first come first served basis.



FISHERMAN'S CRAB DECK

3032 Kent Narrows Way South, Grasonville, MD 21638 | 410-827-6666 | crabdeck.com

Visitors from all over come here to take part in the Maryland tradition of cracking crabs. The Crab Deck is open for both lunch and dinner and times in between. The open-air dining facility features views of the Kent Narrows and Prospect Bay. Besides the crab feasts, the menu features fresh fish, shrimp scallops, lobster, and clams from Fisherman's Seafood Market. You'll find plenty of parking here for your car or your boat. Docking is free. Motorcoach parking available. The Crab Deck hosts corporate and charitable events, parties, and large groups of all kinds including group fishing and charter boat tours. Open April-October.



FISHERMAN'S INN

3116 Main Street (Rt.18), Grasonville, MD 21638 | 410-827-8807 | fishermansinn.com

A Kent Narrows landmark since 1930. Offering a full menu for lunch and dinner in two dining rooms and contemporary bar. Crab Cakes, Crab Soup and Oyster Stew are local favorites. Offering the freshest seasonal boat-to-table dishes in the region. Restaurant, bar, and event venue. Offers locally sourced food and weekly specials. Usually open for holiday meals. Bar offers happy hour specials and sporting events on large screens. Banquet/Party Rooms that can accommodate from 18 to 100 guests. Open daily for lunch and dinner. Online store for gift certificates, the Fisherman's Inn Cookbook, and online take out orders. Panoramic water views. A suspended train travels around the restaurant ceiling while you dine, perfect for kids and adults alike. Home to Miss Betty's Oyster Plate Collection, the largest in the country. Ramp for wheelchairs on the west side of the building.



HARRIS CRAB HOUSE

433 Kent Narrows Way North, Grasonville, MD 21638 | 410-827-9500 | harriscrabhouse.com

Harris Crab House buys seafood from approximately 350 local watermen. Offers traditional Maryland Crab feasts, crab soups and a variety of seafood dishes year-round. New, expanded outdoor seating spaces along the docks. Check out the connected interpretative displays and fun photo spots! Live music dockside during boating season, crab and seafood feasts and special events all year-round. Offers Oyster Feasts on Friday nights throughout the winter. Rooms for private parties. Shipping services to places in the U.S. through Goldbelly. Take out soups and other seafood also available. Located next to Harris Seafood. Watch the workboats travel through the Kent Narrows and unload their catch. Group rates available. Ramp for wheelchairs.



THE JETTY RESTAURANT AND DOCK BAR

BANDS ARE PERFORMING! | 201 Wells Cove Rd., Grasonville, MD 21638 | 410-827-4959 | thejettdockbar.com

Offering casual light fare and dockside and indoor dining. Beach and bar areas with views of the Kent Narrows, Wells Cove and Prospect Bay. Offers live music, popular bands year-round. A dock-and-dine facility. Offers breakfast most weekends and on some weekdays and holidays during boating season. Periodically offers Maryland Blue Crab feasts.



THE NARROWS RESTAURANT

3023 Kent Narrows Way South, Grasonville, MD 21638 | 410-827-8113 | thenarrowsrestaurant.com

Open at 11 am daily.

The Narrows Restaurant features an award-winning menu and wine list that showcases fresh and high-quality ingredients consistent with the flourishing agricultural community and famous seafood industry that surrounds it.

Dock & Dine - Handicap Accessible - Order Online - Waterfront Dining- Waterfront Banquet Room - Outdoor and Fireside Dining - Ship Crab Cakes nationwide.



THE BIG OWL GRILL AND TIKI BAR

3015 Kent Narrows Way South, Grasonville, MD 21638 | 410-827-6523 | thebigowl.com

Musicians and bands are performing! Open seasonally April-October, live music, transient slips. Located on the Kent Narrows. The Big Owl is the place to go to catch the sunset. Offers casual fare, including burgers, fish tacos and crab cakes. Known for serving some of the best drinks around. Happy Hour is Monday-Friday from 3-6. Live entertainment offered. Come and dance on the docks. A private upper deck offers space for events and meetings for up to 50 guests. Open seasonally, April-October.



THE KENT ISLAND YACHT CLUB

117 Yacht Club Drive, Chester, MD 21619 | 410-643-4101 | kiyc.org | For events: kiycevents@gmail.com

The Kent Island Yacht Club offers special food-related and other seasonal events that are open to the public. The Yacht Club sits on 10 acres of land and offers indoor and outdoor space with breathtaking views. The dining room lawn and grounds can accommodate up to 125 guests indoors and 400 guests outdoors. Complementary parking is offered, and catering services are available. The perfect venue for a wedding.

Welcome to The Kent Narrows Waterfront KentNarrowsMD.com



Attractions

- 1 Ferry Point Park*
- 2 Chesapeake Heritage and Visitors Center*
- 18 Watermen's Monument
- 21 Wells Cove Public Landing (charter and head-boat boarding)
- 28 Chesapeake Bay Environmental Center (CBEC)
- 29 Cross Island Trail
- 30 Cross County Connector Trail

* Closed for improvements; opening again in 2024.

Marinas & Boat Storage

- 3 Piney Narrows Yacht Haven*
- 4 Kent Narrows Boatel
- 5 Watermen's Boat Basin at Kent Narrows-Heritage Harbor (workboats and public slips)
- 6 Kent Island Yacht Club
- 8 Safe Harbor Narrows Point*
- 37 Safe Harbor Narrows Point South (service slips)
- 17 Angler's Marina
- 25 Wells Cove Marina
- 26 Cedar Point Marina

* Fuel Docks
Note: Charter and head-boat pickup at various areas throughout the Kent Narrows.

Dock & Dine

- 7 Dock House Restaurant
- 9 Red Eye's Dock Bar (seasonal)
- 10 Harris Crab House/Dessert First
- 11 Big Owl Tiki Bar (seasonal)
- 12 The Narrows Restaurant
- 15 Fisherman's Crab Deck (seasonal)
- 16 Fisherman's Inn Restaurant
- 20 Bridges Restaurant
- 22 The Jetty Restaurant and Dock Bar

Spas

- 33 Seas the Day Medi-Spa
- 34 Swan Cove Spa & Salon

Accommodations

- 13 Best Western Kent Narrows Inn
- 23 Hilton Garden Inn Kent Island
- 27 Holiday Inn Express Annapolis East-Kent Island
- 32 Kent Narrows Rentals: Cass-Away & Cass-N-Reel Houseboats
- 35 Hyatt Place Hotel and Marina Kent Narrows

Shops

- 19 Shore Tackle and Custom Rods
- 24 Ophiuroidea Boutique ("The O")
- 31 Ship's Store at the Boatel
- 38 Hope Boutique
- 39 Sugar Doodles Sweet Shop

- Kent Narrows Waterfront
- Kent Narrows Drawbridge
- Cross Island Trail
- Cross County Connector Trail
- Kent Narrows Boat Ramp
- Ⓜ Gasoline
- P PUBLIC PARKING/TRAIL ACCESS PARKING

Bay Bridge Information:
For real-time traffic information, call 1-877- BAYSPAN (229-7726) or visit BayBridgeMaryland.gov



Map provided courtesy of the
Kent Narrows Foundation
at the Chesapeake Heritage and Visitors Center
425 Piney Narrows Road, Chester, MD 21619
info@kentnarrowsmd.com



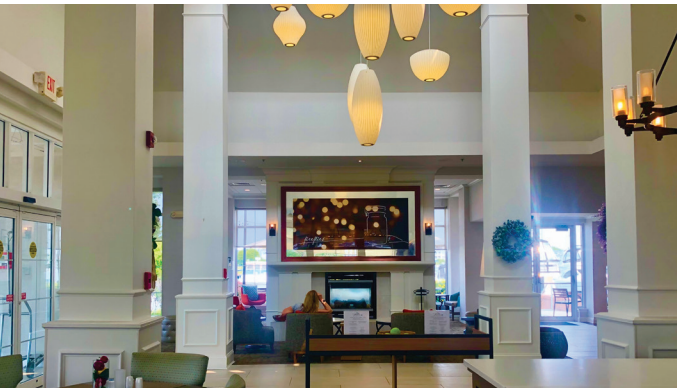
[kentnarrowswaterfront](https://www.facebook.com/kentnarrowswaterfront)

For a copy of our travel guide, visit kentnarrowsmd.com
Also learn about boat rentals, charter and head-boat fishing excursions leaving from the Kent Narrows area. Accessible parking spots are available throughout the waterfront district.

SUGAR DOODLES SWEET SHOP

100 D Piney Narrows Road. (Boatel) Chester, MD 21619
sugardoodlessweetshop.com

Sugar Doodles Sweet Shop is located on the west side of Kent Narrows at the Boatel. Offering Coffee, Crepes, Ice Cream and more.



THE GARDEN GRILLE AND BAR

AT THE HILTON GARDEN INN | 3206 Main Street, Grasonville, MD 21638 | 410-827-3877

The Garden Grille and Bar at the Hilton Garden Inn is open to the general public. The restaurant serves breakfast and dinner. Dine overlooking the scenic Wells Cove Marina. The bar most recently offers Bourbon Nights. Select from 40 Bourbons. Choose four for tasting.

RED EYE'S 2.0

428 Kent Narrows Way North, Grasonville, MD 21638
410-304-2072 | reeyedockbar.com

Red Eye's Dock Bar Restaurant features waterfront views of the Kent Narrows, live bands, casual light fare, cold drinks and a dockside bar. The bar offers specials every night from 6pm to 8pm. (Check Facebook page for band schedule updates and special events.) Open May-September



DESSERT FIRST DOCKSIDE COFFEE & DESSERT BAR

433 Kent Narrows Way North | Grasonville, Md. 21638
Next to Harris Crab House

Opens early for breakfast and stays open through out the day and most evenings. Hours will vary according to season. Offering RiseUp coffee, espresso drinks, coffee smoothies, scooped ice cream and fresh baked pastries, as well as expanded breakfast and dessert menus. Patrons who wish to dine at Harris Crab House may buy their dessert and coffee here and take it to their table when seated. Watch the boats go by as you have your morning coffee.



Adventures On and near the Narrows

Kent Narrows is full of scenic land, water and boardwalk trails that link to the attractions here. They also attract cyclist, runners, birdwatchers and those wishing to experience the uniqueness of the Chesapeake Bay region.



THE CHESAPEAKE HERITAGE AND VISITORS CENTER COMPLEX

Site improvements ongoing. Sites may be closed. Call 410-604-2100 for status.

The Visitor Center sits on the Kent Narrows and is staffed during daytime hours. Visitors are welcomed with a wide array of displays, maps, and local and regional information. Indoor restrooms are available when the center is open.

The Chesapeake Legacy Museum sits within the Center and offers visitors and school groups a glimpse of the region's unique history, heritage and cultures. The museum offers rotating exhibits featuring local arts, crafts and specialized displays.

Outdoor spiral staircases lead visitors to the observation area on the second floor of the building and to the higher up open-air observation tower. Here you will see panoramic views of the Kent Narrows Waterfront region and the scenic Chester River. (an elevator is available to the 2nd floor observation area).

The lawn and the waterfront area in the front of the Visitors Center has interpretative signs, picnic tables and benches scattered throughout. A new walkway along the waterfront, dock and parking lot are being added to the site.

FERRY POINT PARK

*Site improvements are ongoing, park may be closed.
Please check before visiting.*

The park is managed by Queen Anne's County Parks and Recreation

Access from Chesapeake Heritage and Visitors Center
424 Piney Narrows Rd., Grasonville, Md. 21619

This nature park features 41 acres of tidal and non-tidal wetlands and uplands is surrounded by the Chester River, Piney Creek and the Kent Narrows. It's easily accessible from the northwest end of the the Chesapeake Heritage and Visitors Center parking lot. The park is popular place for hikers and birdwatchers year round. Bald Eagles, Osprey, Herons, Ducks and other waterfowl nest here. The park is also a breeding spot for Maryland Terrapins. Ferry Point is open daily from sunrise to sunset. Coolers, alcohol, beach umbrellas other shade structures are not permitted. The sandy shore area of the park is not guarded, and swimming is prohibited.

Note: The Swan Cove Road address that often shows on electronic mapping programs is only for emergency vehicles. There is no parking available or public access from this road. Please use the above address in your GPS.



Ferry Point Park Shoreline.

THE CHESAPEAKE BAY ENVIRONMENTAL CENTER

Open year-round, CBEC is a great place to spend a few hours or a whole day, and only a 10-minute ride from Kent Narrows.

CBEC's beautiful 510-acre nature preserve features four miles of hiking trails where you can explore the woods, meadows, and tidal marshlands. You may spot a red fox, deer, wild turkeys, and all kinds of frogs and turtles around lakes and ponds.

Located on the Atlantic flyway, CBEC is the summer home to ospreys, egrets, herons, and many other birds that migrate south during the winter. In the winter, CBEC's waters are filled with tundra swans, bufflehead ducks, scaups, canvas back ducks and waterfowl. Eagles, hawks, woodpeckers, and kingfishers are year-round residents, along with an array of songbirds. Warblers and other birds use CBEC's land and water as stop-overs on their migrations north and south.

Rent a kayak and explore tidal marshes from the waters of Marshy Creek and the Bay. Look for snakes (no venomous snakes here) shorebirds, fish, crabs, muskrats, and river otters.

Guided hikes, kayak instruction, and a fishing derby for kids are just some of the programs offered here. CBEC also offers summer camps and has a robust program for volunteers. Check CBEC's calendar and Facebook Page for program announcements.

Kayak rentals (May through October) are free to members, \$20 per kayak for non-members. No fee for admission. Memberships are offered and donations are appreciated.

600 Discovery Ln, Grasonville, MD | Open 9 a.m.-5 p.m. daily
410-827-6694 | Bayrestoration.org.



Trail at Chesapeake Bay Environmental Center.

THE MARYLAND WATERMEN'S MONUMENT

This monument features two watermen who are trying to keep their boat afloat in the rough Chesapeake Bay Water. It is dedicated to Maryland natives who died while working on the water and to the watermen for their tremendous contribution to the seafood industry, culture and heritage. The monument was made by local sculptor Tilghman Hemsley.

The Watermen's Basket Trees are placed adjacent to this site during the months of December and January.



The Queen Anne's County Crab Basket Tree Lighting and Holiday Fair happens here in early December.



WATERMEN'S WAY HERITAGE TRAIL

The Heritage Trail is unique to Kent Narrows and is generally connected by the trails, pathways and sidewalks and roads throughout the waterfront district. The bronze Maryland Watermen's Monument, the Watermen's Memorial Bridge, Ferry Point Park, the Chesapeake Heritage and Visitors Center, the Working Waterfront at Harris Seafood, Miss Betty's Oyster Plate Collection at Fisherman's Inn, Wells Cove Public Landing, and the Watermen's Boat Basin at Heritage Harbor are the main attractions along the trail.

Visitors may read the interpretive markers throughout the area and learn more about the area's maritime heritage by asking for the illustrated map at the visitors center. Maps are usually in a holder outdoors if the Center happens to be closed. Special themed itineraries highlighting various aspects of the trail can be found on the Stories of Kent Narrows website at Kentnarrowsstories.org. The website contains links to the Kent Narrows Development Foundation's Vimeo channel which houses a collection of heritage based videos and other resources for those who wish to learn more about the area's rich maritime heritage.

THE PUBLIC LANDING AT WELLS COVE

205 Wells Cove Road , Grasonville, Md 21638
(Located at the end of Wells Cove Road)

One of the most scenic spots in Kent Narrows is at the Public Landing at Wells Cove. Fishing and Tour Boats often line up here to pick up their customers for a day out on the Chesapeake. The 2.0 acre facility allows patrons to enjoy a promenade to view the Eastern Bay. The site was once the location of two seafood packing houses. Public landing permits are required for commercial and other vessels. Daily and season permits are available. For additional permitting information for vessels contact the QAC Parks and Recreation Public Landings Division at 410-758-0835 (7:30 a.m.-3:30 p.m., weekdays). All landings are trash free. Please take home what you bring with you. DNR Fishing permits may be purchased through the County Parks and Public Landings Division or from one of the official purchase locations in the County. The closest location to Kent Narrows is Chesapeake Outdoors, which is located at 1707 Main Street, Chester Md. 410-604-2500. For a complete list of purchase locations visit: www.qac.org/1009/Landings-and-piers.



TRAILS OF KENT NARROWS

Trails are accessible from the marinas, hotels, and restaurants in Kent Narrows, and are suitable for walking, running, and cycling.

THE CROSS ISLAND TRAIL

This trail is a tree lined linear park that offers a safe avenue for non-vehicular transportation. The trail is almost seven miles long, and connects Kent Narrows area to the Chesapeake Bay and Terrapin Park. The trail wanders through farmlands meadows and woods and is accented with ornamental trees. Flanked by park benches, the trail crosses several quaint creeks with wooden bridges and offers spectacular views of waterfowl and wetlands. Portable toilets and other services are available year round at points along the trail.

The easiest place to park in Kent Narrows to access the trail is under the Western span of the Rt. 50/301 Narrows Bridge off of Piney Narrows Road at exit 41. Parking is free.

CROSS COUNTY CONNECTOR TRAIL

The combination boardwalk and asphalt trail connects to the Cross Island Trail at Kent Narrows. It begins almost immediately after crossing the Kent Narrows Drawbridge. The 1.3 mile trail runs parallel to the westbound side of route 301/50. Scenic vistas of the Chester River can be viewed from along the trail. Those wishing to use the Connector Trail may park for free in the public lot under the east side of the 301/50 Kent Narrows Bridge. The trail is easily assessed from all hotels in the Kent Narrows region. (please do not park in the hotel lot unless you are a guest). The trail may also be accessed from its eastern most point at Jackson Creek from Long Point Park which is at the intersection of Jackson Creek Road and Long Point Road. There are a few parking spaces at this end of the trail.

WATER TRAILS

For those who enjoy paddling, our water trails are mapped throughout the Kent Narrows area. Visit parksnrec.org to download maps.



NEARBY PARKS AND RECREATION AREAS

Terrapin Park, Matapeake State Park and Romancoke Fishing Pier are all located on Kent Island. Visit: qac.org/1553/Parks-Recreation or call 410-758-0835.

CLOSEST SOFT LAUNCH SITES FOR KAYAKS

Jackson Creek Public Landing, Grasonville, MD. Permit needed to park.





FISHING TRIPS

Some of the best fishing trips you will ever experience originate from the Kent Narrows. Whether you have been fishing for a lifetime or are a beginning angler, hiring a charter fishing boat is a terrific way to experience the Chesapeake Bay and its waterways. Learn from some of the most experienced captains on all of the Chesapeake Bay.

PARKING
Additional parking for these vessels is available under the Rt.50/301 bridge Exit 41. Parking at the Wells Cove Landing can be limited, so the lot under the bridge on the East side of Kent Narrows is a good alternative. This lot is also recommended for larger vehicles, such as a motorcoach.
Please note that the address listed is not necessary the location of the boat. Please check ahead for embarkation times and instructions.

CAPTAIN TYRONE CHARTERS

202 Wells Cove Road Grasonville, MD | 410-490-0091 | Captaintyronecharters.com | 7:00 a.m. - 3:00 p.m. | 3:30-9:30 p.m.
Captain Tyrone Meredith is a 5th generation fisherman with over forty years of experience working on these waters. He operates the Island Queen The longest headboat (55 feet) in the Kent Narrows fishing fleet. USGC to carry up to 49 passengers. Fishing locations include the Chesapeake Bay, the Wye River, Eastern Bay and the Chester River. Trips generally begin at the end of March and continue through until the end of fall. Trips generally depart daily during fishing season from Wells Cove Public Landing.

FISHERMAN'S INN CRAB DECK CHARTERS

3116 Main Street, Grasonville, MD 21638 | 410-827-8807 | Leave 6:00 a.m., Return 2:00 p.m.
Offering fishing charters for 1-6 and 1-12 anglers. Times and type of trip may be customized. Departing from the dock at the Crab Deck.

KODIAK CHARTERS

Captain Mike Middleton | Angler's Marina next to The Big Owl | 3050 Kent Narrows Way South, Grasonville, MD 21638
443-496-2418 | kodiakchartersmd.com
Offers six-hour fishing charters, four-hour crab feast, and two-hour sunset cruises aboard the KODIAK. Maximum number of guests is 25. Stripers, Spanish Mackerel, Blues, Perch, and Spot. Email for info and reservations: kodiakcharterski@gmail.com
Parking is available at The Big Owl Tiki Bar across from slips.

MISS VIOLET HEADBOAT AND CHARTER FISHING

Captain Darrell Roy, Sr. | 201 Wells Cove Rd., Grasonville, MD 21638 | 410-924-6729 | Captdarrellroyfishing.com
Enjoy fishing on the Chesapeake Bay aboard the Miss Violet, a 46' Deltaville boat that can carry up to 29 passengers. Captain Darrell Roy, Sr. is USCG Master licensed and approved MD licensed fishing guide and MD licensed commercial fisherman.
Deltaville Boat Built to Carry 29 Passengers | Rentals available: Rods, Reels and Rigs | Operating out of Wells Cove Public Landing.

OFF DA' HOOK FISHING CHARTERS

Captain Lamont Wright | 201 Wells Cove Rd., Grasonville, MD 21638 | Phone: 410-827-7820 | Cell: 443-262-2912
Leave 7a.m., Return 3p.m. | Arrive no later than 6:45 a.m. for a 7 a.m. departure
With over 25 years of experience as a watermen, Captain Wright will provide you with the know-how of a Captain and the assistance of a mate. Fishing offered seven days a week during the fishing season. Walk-on passengers welcome, first come, first served. Operating out of Wells Cove Public Landing.



FISHING SEASONS ON THE CHESAPEAKE BAY

SPRING

May: Trolling for Trophy Stripers

SUMMER

Trolling and Light Tackle, Live Lining, Jigging, Chumming for Rockfish, Stripped Bass, Blues Bottom Fishing for White and Yellow Perch, Spot and Croaker

Crab Season (Some Charters will include crabbing and will cook up your crabs for you)

FALL

Trolling, Rockfish, Striped Bass and Blues
Spot is popular on the headboats
Bait: Blood worms, peeler crabs, squid

SPITTIN' FEATHERS OUTFITTERS

443 Kent Narrows Way North, Grasonville, MD 21638

410-758-1837 | dhspittinfeathers@gmail.com

Plan an adventure for your group on Allie Bye, a 46' x 16' Baybuilt USCG certified for 37 passengers. Parking is available under the eastern span of the Kent Narrows 50/301 Bridge. (Exit 42). Departing from the dock at Harris Crab House.

TUNA THE TIDE CHARTER SERVICE

Captain Mark Galasso | 404 Greenwood Creek Lane, Grasonville, MD 21638

410-310-1200 | exploredelmarva.com | capmarco@atlanticbb.net

Fishing, cruising and ecotourism; over 30 years of experience. Fishing trips out of Kent Narrows May-November 15 on renovated 35' Markley. Enjoy light tackle, jigging or casting, traditional trolling, chumming or live baiting, and crabbing. Fly fishing available for beginners & experts. Markley trips available for up to six people. Small boat trips available up to three people on our 243 Everglades. Departing from the dock at the Big Owl Tiki Bar.

SHIRLEY B III

Captain Montro Wright | Headboat and Charter Boat | 201 Wells Cove Road, Grasonville, MD

410-490-2580 | shirleybiii.com | montrowright@yahoo.com

Captain Montro Wright was born and raised in Kent Narrows. He works with his eldest son Captain Lamont Wright, who has followed in his father's footsteps and owns and operates Off Da' Hook Charter Boat Fishing. The Shirley B III is a 50'x15' fiberglass vessel licensed to carry 49 passengers. Enclosed cabin, stereo system, 2 large bathrooms, state-of-the-art navigational electronics. Operating out of Wells Cove Public Landing, up to 49 passengers.

CAPTAIN LLOYD PRICE HEADBOAT FISHING

100 Wharf Drive, Slip #1, Chester, MD 21619 | 410-310-4558 | Captainprice.webs.com | Public Marina, Wharf Road

Captain Lloyd Price serves both groups and individuals.

BAD FISH CHARTERS

Captain Michael Kent | 410-708-6754 | Badfishcharterfishing.com | Slip Location: 3015 Kent Narrows Way South, Grasonville, MD 21638

Mailing Address: 31245 Chesterville Bridge Road, Millington, MD. 21615 | Reservations: Badfishchartersmd@gmail.com

Charter Fishing on the Chesapeake Bay. Departing from Angler's Marina in Kent Narrows (located on the Dock that leads to the Big Owl.) Short run to some of the best fishing in-the mid Chesapeake area. Chesapeake Bay cruises available. Rates and info by request. Offers fishing for all ages.

For a more detailed listing of charter boats working out of Queen Anne's County, visit the fishing pages and blog posts at kentnarrowsmd.com or the county website at visitqueenannes.com/fishing-and-boating/fishing-charters/.



PLEASURE CRUISING

BE DRAWN TO THE BAYS AND THE RIVERS: SIGHTSEEING BOAT TOURS & WATER BASED CULINARY ADVENTURES

What would a trip to Kent Narrows be without seeing it from the water? If you are traveling with a group, it's best to call ahead of time to make arrangements. Some boats book up to a month in advance, while others can take you out without much notice.

BARON CHARTERS

Offers trips from the public landing at Wells Cove. (departure and arrival location) Coolers and ice supplied. Bring your own drinks and snacks. Call 410-490-9671 for prices and to make reservations. Reservations can also be made through Facebook Messenger.

TUNA THE TIDE CHARTER SERVICE

Captain Mark Galasso offers tours, crabbing trips and fishing trips by appointment. Located at the dock at Angler's Marina next to Big Owl Tiki Bar and Grill. Call 410-310-1200 for prices and to make reservations. exploredelmarva.com

BAD FISH CHARTERS

Captain Michael Kent. Chesapeake Bay cruises available. Rates and info by request. Email in advance for reservations: Badfishchartersmd@gmail.com | Badfishcharterfishing.com

Note: Headboats may also offer special boat rides and sunset tours; see fishing section.

SAIL & POWERBOAT RENTALS

C&C Charters' website describes the Chesapeake Bay as "one of the best cruising destinations in the world."

C&C CHARTERS

Bare boat/captained charters; motor yachts, trawlers, express cruisers & sailboats. 35'-52'
506 Kent Narrows Way N, Grasonville, MD | 800-773-7245 | cccharters.com

Plan a yachting vacation aboard one of C&C Charters' fleet vessels. Choose the hands-on experience of a bare boat Charter or relax with a captain on board. C & C Charters is located on the second floor of the Safe Harbor Marina building, across from Harris Crab House. C & C Charters offers a full range of Marine Service for Chesapeake Bay yachtmen and dealers.



Sunset at Cedar Point Marina.

Make Kent Narrows your home port! A variety of maritime based experiences originate from the marinas and the public landings that sit along the Kent Narrows waterfront. This this region has highest concentration of quality maritime related services yacht brokers boat storage and repair facilities in the area. With so many marinas from which to choose, it's easy to find one here that fits your lifestyle and your boat! Fuel docks are located at Piney Narrows and Safe Harbor Narrows Point Marinas.

WATERMEN'S BOAT BASIN AT KENT NARROWS

The county's working watermen are located at this county owned and operated marina which is located at Heritage Harbor off of Wharf Drive, Chester, MD, 21619, on the southwest side of Kent Narrows. For more information about this marina please contact Queen Anne's County Public Landings Division. 410-758-0835. parksnrec.org.



KENT NARROWS BOATEL INDOOR MARINA

100 Piney Narrows Road Chester, MD 21619
410-643-1300 | kentnarrowsboatel.com

The Boatel provides indoor heated storage for boats and a variety of related services. The Boatel can store outboard and I/O powered boats with a length overall up to 40', a beam of 13' or less and a maximum height of 14'. All boats are inspected to insure suitability for rack storage. Boats must have a battery switch to disable all 12 volt power except bilge pumps. It is a hurricane rated facility.

The Boatel is open seven days a week from April 1 to November 1. Special winter launch services and other maintenance services are available upon request. All launches are scheduled through the easy-to-use Boat Cloud mobile app. A general store is open to the public and provides marine items for boating and fishing as well as drinks, ice, and snacks.

The Kent Narrows Boatel is conveniently located near all of the Chesapeake's best boating spots. Check out their website for an interactive map of all of the places you can go. In addition to the Ship's Store, the Boatel complex now includes retail component. Swan Cove Spa, Hope Boutique, and Sugar Doodles have recently opened. The Dock House Restaurant now sits in on the Kent Narrows waterway in front of the Boatel. A new pedestrian oriented boardwalk lines the shore.



SAFE HARBOR NARROWS POINT NORTH AND SOUTH

428 North Kent Narrows Way North, Grasonville, MD
410-827-8888
shmarinas.com/locations/safe-harbor-narrows-point

Safe Harbor Narrows Point sits on beautifully landscaped grounds offering views of Kent Narrows and the Chester River. Offers seasonal slips, transient slips, winter storage, charter boats, fuel dock, boat brokerage, and a waterside restaurant. An on-site yacht yard and marine services are also available. Features include an olympic size swimming pool, and state-of-the-art fitness facility. Slips range from 30-80 feet. A 260 fuel dock is ample and well-lit. A gated marina with secure land space. Transient reservations for slips can be made through Dockwa.com. Safe Harbor Narrows Point has added a new location for boat storage and service on the former Harrison's property which is located adjacent to Fisherman's Inn and Crab Deck. This area of the marina is known as Safe Harbor South. Those who join Safe Harbor Narrows Point will become part of the world's largest boating network. The network offers access to other marinas and membership privileges at over 100 locations.

KENT NARROWS LANDING

The Kent Narrows Landing is located off of Piney Narrows Rd and used for boat launching from the two 34-foot-wide boat launching ramps located on the Kent Island Narrows. The site has parking (no overnight) and portable restroom facilities. A permit is required. Contact the Queen Anne's County parksnrec.org for more information.



CEDAR POINT MARINA

3420 Main Street, Grasonville, MD 21638
410-827-9300 | Cedarpointkn.com

Situated on 12 acres on the lee side of Kent Narrows, Cedar Point Marina offers seasonal slip rentals and premium yacht service in a protected harbor. The marina features a swimming pool, picnic areas, and grills which complement the 200 slips that can accommodate up to 700 vessels. Cedar Point is an authorized Boston Whaler dealership serving the Grasonville area.



KENT ISLAND YACHT CLUB

117 Yacht Club Drive, Chester, MD 21619
410-643-4101 | kiyc.org

Transient boaters are welcome to overnight or weekend stay. 72 Slips, Power and Sail Boats (need at least 5' draft). Memberships in the club are available for those who wish to enjoy the facility year round. KIYC is just 11 miles from Rock Hall to the north for St. Michaels to the south. Knapps Narrows is just a short trip and Oxford is just beyond. It's approximately 21 miles to Baltimore City where the aquarium and museums are located. Just across the Bay is Annapolis and the Naval Academy. The Yacht Club offers a waterfront pool and spectacular views of Prospect Bay. Special events are offered throughout boating season. Please notify the marina if you are from a reciprocal Yacht Club in the special request reservations field. Reciprocal boaters will have a significant discount applied upon confirmation of reservations. The Kent Island High School Sailing Team holds practices at the Yacht Club. Reservations for slips can be made through Dockwa.com. Available for weddings and special events.



PINEY NARROWS YACHT HAVEN CONDOMINIUM MARINA

500 Piney Narrows Rd., Chester, MD 21619
410-643-6600 | pineynarrowusyachthaven.com
info@pineynarrowusyachthaven.com

Features 278 open slips and covered slips up to 67' in length. Year-round recreational yachting facility with resort features offering condominium slips. Gas and diesel fuel dock, repairs on site, winter bubbling dock facilities, free pump out. Swimming pool and picnic area, heated and air conditioned rest rooms and showers, two laundry facilities, Yachtsmen's lounge, fence with key card entry, electric and Wi-Fi service, bike racks. Canvas shop on site for new and repair service. Slips can be purchased or rented.



WELLS COVE MARINA

120 Channel Marker Way, Grasonville, MD 21638
410-827-3869
wellscovetownhomesandmarina.com

Seasonal rentals and transient slips are available. Marina amenities: floating docks, outdoor pool, complimentary Wi-Fi, bath houses, ice for sale, laundry facilities, pump out, ample parking, excellent restaurants and dock bars within walking distance, cable, dockside water and pedestals available with 1/50, 1/30, 2/30 amp and 2/110 volts. This marina is adjacent to the Hilton Garden Inn. Popular seafood eateries are within walking distance. Location: 38.967038 /-76.240513. Rent slips through snagaslip.com

BOATS AND MARITIME SERVICES A SPECIALTY

Kent Narrows is the perfect spot to keep your boat. This area has a high concentration of marinas and services for all types of boats. The **Kent Narrows Marine Boatel** a new state of the art indoor storage facility offers high and dry storage facilities along with a variety of services that will make your boating experience here pleasurable.

Kent Narrows is also the perfect place to come if you wish to buy or sell a boat.

This area serves as a one-stop-shop for all of your boating needs, including financing and insurance services. Visitors travel here to attend the popular **Bay Bridge Boat Show** which is held at the nearby **Bay Bridge Marina** in the Spring and Fall. Kent Narrows-based yacht brokers also hold shows and sales events throughout boating season.

The newest business to come to Kent Narrows is **Marine Max** at **Safe Harbor Narrows Point Marina**.

BOUTIQUES, SHOPPING, SPAS & FITNESS

BOUTIQUES



OPHIUROIDEA

110 Channel Marker Way, Grasonville, MD 21638 | 410-304-2049
Coastal inspired boutique. Clothing, Jewelry, Home Decor, Art and Gifts.

HOPE BOUTIQUE

100 Piney Narrows Rd. Suite C Chester, MD 21619
shophopeboutique.com
Offering cute, casual and affordable boutique clothing that helps you to feel amazing.

SPA & FITNESS

SEAS THE DAY MEDI SPA

3200 Main St., Grasonville, MD 21638
410-304-2051 | seasthedaymedispa.com
Botox, Fillers, Microdermabrasion/Chemical Peels/Cool Sculpting/
Micro-needling/ Weight Loss & Wellness Program.

SWAN COVE SPA

100 Piney Narrows Road, Suite 1, Chester, MD
410-604-1500 | swanovespa.com
Full service spa and salon.

SAFE HARBOR NARROWS POINT FITNESS CENTER

410-827-8888
428 Kent Narrows Way North, Grasonville, MD 21638
In the Safe Harbor Narrows Point North Complex
Offering individual fitness center and pool memberships.

REAL ESTATE

KEVIN DEY REALTY

3200 Main Street, Grasonville, MD
kevindeyrealty.com | 410-827-6163
provides personalized services for clients interested in buying, selling,
or renting residential, commercial lot and land listings. Property man-
agement services are also provided.

BERKSHIRE HATHAWAY HOMESERVICES HOMESALE REALTY

4100 Piney Narrows Road , Unit F
Chester, Md. 21619

NEARBY ATTRACTIONS BEYOND KENT NARROWS ANTIQUES

Antiquing and Local Arts & Crafts on Main Street in
Grasonville. The following shops are the closest to Kent
Narrows. Please check out a more comprehensive listing on
visitqueenannes.com.

ANCHORS AND OARS

3712 Main Street, Grasonville, MD

HADDAWAY'S ANTIQUES

3707 Main Street, Grasonville, MD
410-827-7668

GOLF

BLUE HERON GOLF COURSE

3270 Romancoke Road, Stevensville, MD
410-643-5721

QUEENSTOWN HARBOR GOLF

310 Links Lane, Queenstown, MD | QHGolf.com
800.827.5257 | info@qhgolf.com

OUTLET SHOPPING

OUTLET SHOPPING SIMON OUTLETS

441 Outlet Center Drive, Queenstown, MD 21658
410-827-8654

BUSINESSES SERVING BOATERS

BLUE WATER YACHTS

444 Kent Narrows Way North, Grasonville, MD 21638
Yacht sales, service and support. Sportfish, Center Consoles, Motor yachts, Downeast, Express Cruisers. In-House Financing Services Available. Backed with the support of eight well-established boat brands. Viking Yachts, Jarrett Bay Boatworks, Valhalla, and much more. On second level of the Safe Harbor Narrows Point Building across the street from Harris Crab House and Red Eyes.

CHARTER LAKES MARINE INSURANCE AGENCY

110 Channel Marker Way, Grasonville, Md 21638
charterlakes.com | 410-827-7750
Boat insurance specialist, providing protection for boats, yachts, charter boats, sport fishing, commercial or passenger vessels.

GALAHAD MARINE

Safe Harbor Narrows Point Marina on Kent Narrows
428 Kent Narrows Way N., Grasonville MD 21638
833.425.2423 GalahadMarine.com

HURRICANE AWNING & CANVAS, LLC

500 Piney Narrows Rd. , Chester, MD 21619 (at Piney Narrows Marina)
410-643-7840 | hurricanewawningandcanvas.com
Custom canvas and fabrication shop.

KENT NARROWS BOATEL

The Indoor Marina | 100 Piney Narrows Road Chester, MD 21619
410-643-1300 | kentnarrowsboatel.com
Kent Narrows Boatel offers a variety of services for boaters including a general store that offers ice, drinks, and snacks as well as marine items for boating and fishing. See marinas section for more information.

KENT NARROWS YACHT YARD

321 Piney Narrows Road, Chester, MD 21619
410-643-4400 | kentnarrowsyachtyard.com
Full Service Marine Yard. Offering extensive boat services to keep your boat in good condition. 6-ton travel lift that can handle many size vessels. Land Storage, shrink wrap, bottom painting, Awigrip refinishing waxing engine repowering and repair. Locally owned and operated.

KNOT 10 YACHT SALES

106 Wells Cove Road, Grasonville, MD 21638
844-815-0508 | Knot10.com
Yacht Brokerage that focuses on selling and listing brokerage boats.

MARINE MAX

448 Kent Narrows Way North, Grasonville, MD 21638
410-732-1260 | At the Safe Harbor Narrows Point Marina Complex
Boat Sales and service center for premium brands including Sea Ray, Scout, Aviara, Azimut, Galeon, Aquila Power Catamarans and Cruisers Yachts. Boat owners that purchase through Marine Max gain access to Getaways™ trips and events.

OFF THE HOOK YACHT SALES

3033 Kent Narrows Way S. Suite 5 | 410-609-9893
Boat Brokerage that offers top dollar for used boats.

OCEAN CLUB YACHTS

3033 Kent Narrows Way S., Unit 4, Grasonville MD 21638
410-827-0004 | OceanClubYachts.com
Ocean Club Yacht Sales is a service for new and pre-owned yachts. Specializing in Sunseeker, Sea Ray, Azmut and Cruisers Yachts.

RUDY MARINE

443-995-3785 | rudymarine.com
Ocean Club Yacht Sales
Specializes in family boating. New and pre-owned boats. Provides boat and out-board service. Grasonville location is by appointment only.

SHIP'S STORE AT THE KENT NARROWS BOATEL

100 Piney Narrows Road, Chester, MD
A general store is open to the public and provides marine items for boating and fishing as well as beer, wine, soft drinks, ice and snacks.

SHORE POWER SOLUTIONS

417 Piney Narrows Road, Chester, MD | 410-827-7810
Fully trained diesel technicians certified to handle marine diesel engine needs. Family owned and operated. Services include full diagnostics for electronic engines. Includes checking for software updates and engine history downloads. Engine maintenance, engine repair, rebuilds, transmission service. Will do winterization (October- January) Spring commissioning (Feb-May).

SHORE TACKLE AND CUSTOM RODS

3100 Main Street, Grasonville, MD 21638
410-827-7765 | shoretackle.com | billy@shoretackle.com
Handcrafted Rods. Signature line is OB Custom Rods. Stand-Up Rods, Deep Drop Rods, Planer Rods, IGFA Trolling Rods, Teaser Rods. Call Bill O'Brian. Located between the Crab Deck and Fisherman's Inn.

TOTAL MARINE OF MARYLAND, INC.

106 Wells Cove Road
410-604-6000 | totalmarineofmaryland.com
New Yacht Sales, Brokerage Yacht Sales, Mobile Marine Service

WYE RIVER MARINE

410-643-9966 | wyerivermarine.com | info@wyerivermarine.com
Buy, Sell and Trade Boats – Dealers for Sea Hunt center consoles, Four Winns boats and Sundance Skiffs. Certified Yamaha Outboard service center with Master Techs on staff. Mobile repair service. Electronic installation and Fiber-glass Repair.

TOWBOATUS

800-395-2628 | BoatU.S.com
Boat Towing Membership-based towing service.

GETTING HERE

Arriving By Motor Vehicle:

The Kent Narrows Waterfront is located off of Maryland Rt. 301/ Rt 50 just five miles east of the Chesapeake Bay Bridge. Take Exit 42 for Kent Narrows East and Exit 41 for Kent Narrows West. Either exit will take you to hotels and restaurants. Follow the blue signs to restaurants, hotels and marinas.

Parking:

Free Public Parking is available in the lots under the Kent Narrows 301/50 Bridge and at the Chesapeake Heritage and Visitors Center. Please use these lots to access the Trails.

Limited parking is also available at the Public Landing at the end of Wells Cove Road. This lot is heavily used during the boating season. Please note that no overnight parking or camping is allowed in the public lots. Obstructing drive lanes and emergency access is also prohibited. These lots are patrolled, and violators may be towed. **The Visitors Center lot is temporarily closed for improvements. Reopens in 2024.*

Arriving By Boat:

If you plan to arrive by boat you'll find marinas, transient slips and dock-and-dine slips at most of our restaurants and dock bars. You can make arrangements in advance or, depending on the venue, simply cruise in and visit. There is also a public landing and a boat ramp here. Before your trip, it's always a good idea to check out NOAA's marine and weather forecast and also the tide charts for the Kent Island Narrows.

The Kent Island Narrows entrance is at Mile 4.0, Chester River. A marked channel leads from the Chester River to Prospect Bay.

Arriving By Air:

The closest airports with commercial flight operations to this area include Baltimore Washington International, Washington National, Dulles and Philadelphia International Airports.

The Bay Bridge Airport is a county-owned public-use airport located in nearby Stevensville. The airport is mostly used for general aviation. Please feel free to call 410-643-4364 and staff will assist you with any facility, surface transportation, lodging, or dining questions you may have.

It takes about seven minutes to drive to the Kent Narrows Waterfront from the Bay Bridge Airport when traffic is light. 202 Airport Road Stevensville, MD 21666

Distance to airports:

Baltimore-Washington International Airport (BWI, MD), near Lithicum Heights, MD (36 miles)

Washington Dulles International Airport (Dulles, VA) (72 miles)

Ronald Reagan Washington National Airport (D.C.) (47 miles)

Easton Airport (Easton, MD) (22 miles)

Bay Bridge Airport (Kent Island) (4.7 miles)

Philadelphia International Airport (Philadelphia, PA) (97 miles)

Wilmington Airport (ILG) (New Castle County, DE) (68 miles)

Salisbury Regional Airport (Salisbury, MD) (78 miles)

TRANSPORTATION SERVICE

Kent Island Sedan Services

443-988-3345 | kentislandsedanservices.com | ride@callKISS.net

Provides door to door service to and from airports, train stations and local service to marinas and restaurants and shopping destinations.

BayRunner Shuttle

410-912-6000 | Book online at reservations.bayrunnershuttle.com

Is based in Salisbury Md and serves Kent Narrows regularly transporting patrons to and from regional airports.

Prince Limousine

443-480-3682 | Princelimomd.com

Prince Limousine is a family-owned business servicing local and regional clients since 1994. While based in Chestertown, Prince serves Kent Narrows and provides airport transportation, transportation for weddings, parties, proms birthdays and event shuttle service.

Taxi Crab kentislandtaxicrab.com | 239-628-9340



Kent Narrows is conveniently located just off Rt. 301/50, five miles east of the Chesapeake Bay Bridge. Take Kent Narrows East, exit 42, for Grasonville addresses and Kent Narrows West, Exit 41, for Chester addresses. Both exits provide access to the entire waterfront region.

CHESAPEAKE BAY BRIDGE INFORMATION

It's advisable to check the Chesapeake Bay Bridge traffic conditions during peak times. For webcams, traffic and weather conditions affecting travel over the bridge call 1-877-BAYSPAN or visit Baybridge.Maryland.Gov

The best way to avoid Bay Bridge Traffic is to sign up to receive Bay Bridge Traffic Advisories by email. Go to mtda.maryland.gov to sign up. Please be considerate if you are passing through, unless you need to access to local services, it's advisable to stay

LET US FEED YOU
Bay Bridge Traffic Conditions.

[f](#) [t](#) @TheMDTA

BAYBRIDGE.COM + 1-877-BAYSPAN
(229-7726)

on Rt. 50 if there are backups at the Bay Bridge. When through traffic exits on to local roads it can cause even more backups.

INFORMATION FOR VISITORS

CHESAPEAKE HERITAGE AND VISITORS CENTER

The Chesapeake Heritage and Visitor Center is undergoing site improvements and will be reopened in 2024. The Visitor Information Center has temporarily moved to nearby Queenstown Premium Outlets at 441 Outlet Center Drive in Queenstown, Md.



View of the Kent Narrows waterway and waterfront from the new boardwalk promenade that runs between the Boatel and the Kent Narrows.

425 Piney Narrows Road, Chester, MD 21619

visitqueenannes.com | 410-604-2100 |

kentnarrowsmd.com | 410-604-2491

A good place to start your visit is at the Chesapeake Heritage and Visitors Center, home to the Queen Anne's County Department of Economic Development and Tourism and to the Kent Narrows Development Foundation. The Kent Narrows Development Foundation provides information specific to the Kent Narrows region, while Queen Anne's County tourism provides a broader portfolio of services.

Visitors to this site love to climb up the observation towers to see a bird's-eye view of the Kent Narrows waterway, the Chester River, Ferry Point Park and the rest of the waterfront area surrounding the Kent Narrows. The building houses the Chesapeake Legacy Museum and also serves as an orientation center for the Kent Narrows, Queen Anne's County, and the Chesapeake Bay regions. Both are managed by Queen Anne's County. The staffed information center provides maps, brochures and other tourism-related materials. A new docking facility in front of the building is designed to host visiting vessels, and will soon be opened.

Adjacent to the building, visitors will find a scenic boardwalk trail which crosses a salt marsh to Ferry Point Park. The park is a popular place for bird watching and nature walks and offers stunning views of the Chester River, Kent Narrows and Piney Creek. The park is open from sunrise to sunset and is managed through the Queen Anne's County Parks Department.

More about Kent Narrows and Queen Anne's County can be found on the State of Maryland's website: visitmaryland.org, or through the **Queen Anne's County Chamber of Commerce** at qacchamber.org.

The Maryland Office of Tourism Development operates the **Bay County Welcome Center** located at the Rest Stop on Rt. 301 between Centreville and Church Hill. Call 410-758-2181 for more information on this site. Maryland travel counselors are available during daytime hours and will supply info on the Kent Narrows Waterfront. Inbound visitors and tour producers planning extended holidays will find the **Capital Region USA (CRUSA)** website, capitalregionusa.org helpful.

Kent Narrows *On the Water*



Accommodations

Best Western Kent Narrows Inn

3101 Main Street, Grasonville, MD 21638
410-827-6767

Across from Fisherman's Inn & Crab Deck and within walking distance to other restaurants. Overlooks the marinas and Prospect Bay.

Hilton Garden Inn Kent Island

3206 Main Street, Grasonville, MD 21638
410-827-3877

Located in Wells Cove, bayfront rooms with balconies, easy access to local tourist areas.

Holiday Inn Express

Annapolis East — Kent Island

1020 Kent Narrows Road
Grasonville, MD 21638 • 410-827-4454

With rooms overlooking the scenic Chester River, easy access to restaurants, marinas, and tourist areas.

Hyatt Place Hotel and Marina Kent Narrows

3028 Kent Narrows Way South
Grasonville, MD 21638 • 443-446-6000

120 rooms and 5000 square-feet of banquet & event space.

Kent Narrows Rentals Cass-Away Houseboat

3015 Kent Narrows Way South
Grasonville, MD 21638

kentnarrowsrentals.com

A 640-square-foot luxury houseboat with 2 full bathrooms, 2 bedrooms with queen beds, full kitchen, spacious living area, and a rooftop deck.

Spas

Seas the Day Medi-Spa

3200 Main St., Grasonville, MD
410-304-2051 • seasthedaymedispa.com

Nonsurgical anti-aging treatments, skin rejuvenation, medical cannabis, and CoolSculpting

Swan Cove Day Spa & Salon

100 Piney Narrows Road, Suite I
Chester, MD 21619

410-604-1500 • swancoverespa.com

Full-service spa and salon. Transform your look & pamper yourself with hair, nail and skin treatments.

Shops

Ophiuroidea Boutique ("The O")

110 Channel Marker Way, Suite 100
Grasonville, MD 21638

410-304-2049 • ophiuroidea.com

Offering coastal inspired clothing, unique & handcrafted items, mermaid art, sea glass jewelry, home décor, and one-of-a-kind finds.

Hope Boutique

100C Piney Narrows Road
Chester, MD 21619

shophopeboutique.com

Offering cute, casual, and affordable boutique clothing that helps you feel amazing.

The Ship's Store at the Boatel

100 Piney Narrows Road
Chester, MD 21619

410-643-1300 • kentnarrowsboatel.com

Beer, wine, ice, boating supplies and sundries (located at the Kent Narrows Boatel).

Shore Tackle and Custom Rods

3100 Main Street
Grasonville, MD 21638 • 410-827-7765
shoretackleandcustomrods.com

Offering tackle and custom rods (located in the Fisherman's Inn complex)

Marinas* & Boat Storage

See Accommodations for information on the Hyatt Place Marina

Angler's Marina

3015 Kent Narrows Way South
Grasonville, MD 21638

410-643-4404

Cedar Point Marina

3420 Main St., Grasonville, MD 21638
410-827-9300 • cedarpointkn.com

Seasonal slip rentals in a protected harbor that can accommodate up to 70' vessels. Authorized Boston Whaler dealership.

Kent Island Yacht Club

117 Yacht Club Drive
Chester, MD 21619

410-643-4101 • kiyc.org

Kent Narrows Boatel

100 Piney Narrows Road
Chester, MD 21619

410-643-1300 • kentnarrowsboatel.com

Year-round, climate-controlled boat storage at the Kent Narrows.

Piney Narrows Yacht Haven

A Condominium Marina
500 Piney Narrows Road

Chester, MD 21619

410-643-6600

pineynarrowsyachthaven.com

Safe Harbor Narrows Point

428 Kent Narrows Way North
Grasonville, MD 21638

410-827-8888 • SHMarinas.com

Wells Cove Marina

120 Channel Marker Way
Grasonville, MD 21638

410-827-3869

wellscovetownhomesandmarina.com

Dock & Dine

Big Owl Grill and Tiki Bar

3015 Kent Narrows Way South
Grasonville, MD 21638

410-827-6523 • thebigowl.com

Dockside grill and bar, live music on weekends. Open seasonally.

Bridges Restaurant

321 Wells Cove Road
Grasonville, MD 21638

410-827-0282 • bridgesrestaurant.net

Fine and casual dining. Made-to-order dishes prepared from scratch.

Dessert First

433 Kent Narrows Way North
(next to Harris Crab House)

dessertfirstthch.com

Dockside cafe and dessert bar.

Dock House Restaurant

110 Piney Narrows Road
Chester, MD 21619

443-446-4477 • dockhouserestaurant.com

Coastal cuisine featuring fresh seafood, local ingredients, signature cocktails, craft beers, and wines. Enjoy panoramic views of Kent Narrows.

Fisherman's Crab Deck

3032 Kent Narrows Way South
Grasonville, MD 21638

410-827-6666 • crabdeck.com

Restaurant and dockside bar, and crab feasts Specializing in group events and outings.

Dock & Dine. Open seasonally.

Kent Narrows *On the Water*



Fisherman's Inn Restaurant

3116 Main Street (Rt. 18)
Grasonville, MD 21638
410-827-8807 • fishermansinn.com
Landmark since 1930. Restaurant featuring fresh seafood, crab cakes and slow roasted Prime Rib. Nauti Mermaid Bar offers cocktails and 7 flat-screen TVs. Dock & Dine.

The Garden Grille and Bar

3206 Main St, Grasonville, MD 21638
410-827-3877
Located at the Hilton Garden Inn. Offering breakfast and dinner. Outdoor waterside dining as weather permits.

Harris Crab House

433 Kent Narrows Way North
Grasonville, MD 21638
410-827-9500 • harriscrabhouse.com
Offering fresh seafood, dockside dining, and bar. Crab feasts and daily specials offered, as available. Open year round.

The Jetty Restaurant & Dock Bar

201 Wells Cove Road
Grasonville, MD 21638
410-827-4959 • jetydockbar.com
Restaurant and dockside bar, live music, and food. Offers breakfast on weekends during the boating season.

The Narrows Restaurant

3023 Kent Narrows Way South
Grasonville, MD 21638
410-827-8113 • thenarrowsrestaurant.com
Fine dining in a casual atmosphere featuring crab cakes, cream of crab soup, and wine.

Red Eye's Dock Bar

428 Kent Narrows Way North
Grasonville, MD 21638
410-827-3937 • reeyesdockbar.com
Dockside bar and grill. Live music on weekends. Open seasonally.

Sugar Doodles Sweet Shop

100D Piney Narrows Road
Chester, MD 21619
sugardoodlessweetshop.com
Offering crêpes, coffee, and ice cream

Attractions**

Chesapeake Bay Environmental Center

600 Discovery Lane
Grasonville, MD 21638
410-827-6694 • bayrestoration.org
A 510-acre wildlife preserve with 4 miles of walking trails is just a short drive or boat ride from the Kent Narrows. Free and open to the public. Kayak rental available.

Chesapeake Heritage and Visitors Center & Ferry Point Park Entrance***

425 Piney Narrows Road
Chester, MD 21619
410-604-2100 • visitqueenannes.com
Ferry Point Park, the seven-mile-long Cross Island Trail, and the Cross Island Connector Trail (for biking, running, and walking) are easily accessible from hotels and the Visitors Center.

Maryland Watermen's Memorial Monument

Main Street at Kent Narrows Way South
Grasonville, MD 21638

Trails

The Cross Island Trail and the Cross County Connector Trail are managed by Queen Anne's County Parks and Recreation.
Open from sunrise to sunset year round. Parking for trails located under the Kent Narrows Bridge and at the Visitors Center.

Watermen's Way Heritage Trail/ Stories of the Kent Narrows

kentnarrowsstories.org
Virtual/self-guided walking tours of Kent Narrows Waterfront. Map available at the Visitors Center.

* Open and covered slips, yacht repair services, winter bubbling and fuel docks with gas & diesel. Slips available to own or lease. Transient boat slips are available at marinas and restaurants.

**The Queenstown Premium Outlets and Queenstown Harbor Golf are nearby. Antiquing, winery, brewery, distillery, and historic attractions are within a five-minute drive of our waterfront. For more information, VisitQueenAnnes.com.

***Closed for improvements; opening again in 2024.

* Open and covered slips, yacht repair services, winter bubbling and fuel docks with gas & diesel. Slips available to own or lease. Transient boat slips are available at marinas and restaurants.

**The Queenstown Premium Outlets and Queenstown Harbor Golf are nearby. Antiquing, winery, brewery, distillery, and historic attractions are within a five-minute drive of our waterfront. For more information, VisitQueenAnnes.com.



Sugar Doodles Sweet Shop.



Dessert First offers fresh baked goods.



Queen Anne's County MARYLAND

WHERE SHORE ADVENTURES BEGIN



PLAN YOUR **CHESAPEAKE BAY ADVENTURE**
VisitQueenAnnes.com | 410-604-2100



KENT NARROWS WATERFRONT

A PLACE FOR ALL SEASONS

Traditional Eastern Shore Crab and Seafood Feasts Year Round | Waterfront Hotels
Dock & Dine Eateries | Nature Trails | Live Music | Water-Based Adventures
Indoor & Outdoor Marinas | Boat Sales & Services | Wedding Venues



Check out our new look! More hotel and conference spaces!
New hotel, restaurant, spa, retail, and waterfront boardwalk trail

kentnarrowsmd.com

On the scenic waterways of Queen Anne's County, just five miles east of the Chesapeake Bay Bridge



KENT NARROWS DEVELOPMENT FOUNDATION
425 PINEY NARROWS RD., CHESTER, MD 21619
KENTNARROWSMD.COM | INFO@KENTNARROWSMD.COM

 KENT NARROWS WATERFRONT